

PSi #22

JULY 5 - 9, 2016

Performance Climates

MELBOURNE

Welcome to the traditional lands of the Kulin Nations. We respectfully acknowledge the people of the Boon Wurrung and the Woi Wurrung who have lived their culture on this land for tens of thousands of years.



THE UNIVERSITY OF
MELBOURNE



PSi

Performance
Studies
international

ARTS HOUSE



MELBOURNE SUSTAINABLE
SOCIETY INSTITUTE

WELCOME

Friends and colleagues,

Welcome to PSi#22 in Melbourne, the first annual PSi conference to be held in Australia. We're delighted to host over 300 artists, scholars and activists for a packed program of events on the theme of Performance Climates. We're interested in the complexities of climates, in all their many events, forms and atmospheres, and we're interested in how and why and where our field of performance might connect with climates to re-think the possibilities of human and non-human activity in the world.

In this booklet you'll find general information, the conference overview and daily sessions, an introduction to the Arts House performance program, and maps to help you find your way. In order to reduce our carbon footprint we've minimised waste, so for a detailed guide to events, titles, abstracts and biographies, please see the extended program and additional materials on our website www.psi2016.com.

We wish you a wonderful stay in Melbourne.

Eddie Paterson, on behalf of the PSi#22 Conference Organising Committee.

INFORMATION

Wifi Details: The University of Melbourne has an eduroam wifi access. If your home institution supports eduroam, please sign on with your credentials. If not, for the duration of the conference, logon to the UniWireless network using the following details:

Username: **pclimate**

Password: **zdB7Zp**

Food: A light lunch will be provided Wednesday - Friday during the conference, along with morning and afternoon tea in the breaks. There are also a number of great cafes, restaurants and food vendors on and around the campus, and Spatula&Barcode - with help from many locals - have put together a great guide to what's out there - online at www.psi2016.com/#/eating-guide/a1ynv. On Saturday, 12:30, Spatula&Barcode are also curating foodwalks with local hosts - see page 4 for details. You can find more details about Spatula&Barcode's projects at: <http://spatulaandbarcode.net>

AWARDS

The PSi community would like to congratulate the following 2016 award winners:

Congratulations to Dennis Gupa, winner of the 2016 Dwight Conquergood Award.

This award is made in honour of the memory of Dwight Conquergood to an individual whose work around cultural performance in some way connects to and extends Conquergood's own practice. The DCA is given to an artist, activist or emerging academic conducting research or working on projects with disenfranchised communities.

Congratulations also to Ella Parry-Davies, runner up for the Dwight Conquergood Award and recipient of a fee waiver to the 2016 conference

Congratulations to Sophia Pearce, winner of the 2016 Enrichment Bursary.

The Enrichment Bursary is to support new and unaffiliated artist/scholars/activists, particularly those from groups under-represented to attend the PSi conference and make a contribution.

We are delighted to announce the 2016 ASA Award (Artist | Scholar | Activist) has been given to Back to Back Theatre.

The ASA Award is an award for outstanding achievement within the cross-disciplinary field of performance. The ASA Award will be given to an Artist/ Scholar/ Activist who has spent at least a decade fostering exchange between Artists/ Scholars/ Activists; and fostering collaboration either interdisciplinary or international.

For almost thirty years, Back to Back Theatre has been making work that tests the boundaries of performance, performers and audiences as well as the assumptions we make about all three. PSi #22 will feature their work through screenings of their collaborative project *The Democratic Set* in the George Paton Gallery on Days 1-3 Throughout conference during daytimes, and a special discussion with members of the company 9:00-10:30 on Day 3 of the conference, Friday the 7th of July.

PSi Awards committee: Awards officer Caroline Wake, with board members Heike Roms, Johanna Householder, Peter Eckersall, Sean Metzger, and Maaike Bleeker plus representatives of the Performance Climate conference team.

CONFERENCE SCHEDULE OVERVIEW

	Tue 5th July OPENING	Wed 6th July DAY 1: Weather and Events	Thu 7th July DAY 2: Land and Durations	Fri 8th July DAY 3: Habitat and Environments	Sat 9th July DAY 4: Atmosphere and Affects		
9:00	Installation & Bump-in	Registration Arts Hall - (Old Arts)	Panels & Presentations	Fluid States Guild Theatre	Panels & Presentations	Working Groups	Panels & Presentations
9:30		Keynote: Richard Frankland - <i>What do We Mean by Climate?</i> JH Michell Theatre, Richard Berry Building					
10:00	Artist Induction and Venue Tour: Meet at the Guild Theatre and the George Paton Gallery for tours of your performance space	Break	Break Arts Hall - (Old Arts)	Break Arts Hall - (Old Arts)	Break Arts Hall - (Old Arts)	Break Arts Hall - (Old Arts)	Break Arts Hall - (Old Arts)
10:30							
11:00		Keynote: Peta Tait - <i>Performing Species Kinship and Strange Emotions</i> JH Michell Theatre, Richard Berry Building	Panels & Presentations	Panels & Presentations	Keynote: Rebecca Schneider - <i>Extending a Hand: Gesture, Duration, and the Posthumous Turn</i> Old Arts Public Lecture Theatre		
11:30						Light Lunch Arts Hall - (Old Arts)	Light Lunch Arts Hall - (Old Arts)
12:00	Installation of George Paton Gallery program	Panels & Presentations	Panels & Presentations	Panels & Presentations	Working Groups		
12:30	Registration Arts Hall - (Old Arts)					Light Lunch Arts Hall - (Old Arts)	Panels & Presentations
13:00		Panels / Presentations	Break Arts Hall - (Old Arts)	Break (own arrangements)	Plenary Panel <i>Listening to Country 2</i> Arts House - Meat Market	Closing Drinks Details TBA	
13:30							Break Arts Hall - (Old Arts)
14:00		Panels & Presentations	PSi AGM & Presentation of the ADA Award 17:15-18:15	Drinks/ Dinner (Own Arrangements)	Special durational performance event: <i>Refuge</i> 12pm+ (24 hours) Arts House – North Melbourne Town Hall		
14:30	Break Arts Hall - (Old Arts)					Drinks/ Dinner (Own Arrangements)	Drinks/ Dinner (Own Arrangements)
15:00		Panels & Presentations	PSi AGM & Presentation of the ADA Award 17:15-18:15	Drinks/ Dinner (Own Arrangements)	Special durational performance event: <i>Refuge</i> 12pm+ (24 hours) Arts House – North Melbourne Town Hall		
15:30	Panels & Presentations					PSi AGM & Presentation of the ADA Award 17:15-18:15	Drinks/ Dinner (Own Arrangements)
16:00		Panels & Presentations	PSi AGM & Presentation of the ADA Award 17:15-18:15	Drinks/ Dinner (Own Arrangements)	Special durational performance event: <i>Refuge</i> 12pm+ (24 hours) Arts House – North Melbourne Town Hall		
16:30	Panels & Presentations					PSi AGM & Presentation of the ADA Award 17:15-18:15	Drinks/ Dinner (Own Arrangements)
17:00		Doors open – Latour Public Lecture	Launch of <i>Global Performance Studies</i> journal and George Paton Gallery program Dinner (Own Arrangements)	PSi AGM & Presentation of the ADA Award 17:15-18:15	Drinks/ Dinner (Own Arrangements)		
17:30	Welcome to Country - Wurundjeri & Keynote: Bruno Latour - <i>On Sensitivity: Arts, Science and Politics in the New Climatic Regime</i> Old Arts Public Lecture Theatre	Dinner (Own Arrangements)				PSi AGM & Presentation of the ADA Award 17:15-18:15	Drinks/ Dinner (Own Arrangements)
18:00			Dinner (Own Arrangements)	PSi AGM & Presentation of the ADA Award 17:15-18:15	Drinks/ Dinner (Own Arrangements)		
evening	19:15-23:00 Opening Night Processional Feast A Spatula & Barcode event, featuring: Climate Reports, Welcome Toasts, Music and Market Food.	Arts House – Performing Climates program begins: 19:30 <i>Cut the Sky</i> Premiere 21:00: <i>Late Night Conversations</i> Joelle Gergis & Ed Scheer				Arts House – Performing Climates program continues 19:30 <i>Cut the Sky</i> 21:00: <i>Late Night Conversations</i> Richard Eckard & Maaik Bleeker	Arts House – Performing Climates program continues: 19:30 <i>Cut the Sky</i> 21:00 <i>Late Night Conversations</i> Kate Auty & Richard Gough

Bruno Latour

Sciences Po & London School of Economics

On Sensitivity: Arts, Science and Politics in the New Climatic Regime

What equipment is necessary to render us sensitive to the New Climatic Regime? There is science, of course, without which we would not have become aware of the change. There is also politics, the only way to assemble the relevant stake holders. But since we don't seem naturally endowed with the right sensitivity to absorb the magnitude of the ecological mutations we confront, there is also the arts.

The lecture will review the overlap between these three forms of aesthetics (defined as what makes us sensitive to hitherto unknown phenomena) by using various performances in which the author has been involved: theatre, exhibitions, simulations, as well as interventions in social science and philosophy.

Bruno Latour is Professor at Sciences Po, Paris where he is director of Sciences Po médialab and a Centennial Professor in the Department of Sociology at the London School of Economics. Latour is a world-leading sociologist of science and anthropologist of modernity.

Professor Latour has published thirteen books, including the recent *An Inquiry into Modes of Existence* (Harvard University Press, 2013), and received prestigious awards and honours including the 2013 Holberg Memorial Prize – the equivalent of the Nobel Prize for humanities and social science. His work has been translated into twenty-seven languages.

Date: July 5th

Time: 5:30-7:15pm

Location: Old Arts Lecture Theatre, Old Arts Building

Spatula&Barcode present

PSi22 Opening Night: Performance Climates Processional Feast

Arts collaborative Spatula&Barcode (Laurie Beth Clark and Michael Peterson) have curated for the PSi22 opening an event that brings together their Foodways project with the themes of Performance Climates.

We will move from the conclusion of Bruno Latour's address to the city's historic Meat Market (now an important performance venue), carrying texts from the Foodways project and enjoying warming nourishment along the way. At the Meat Market, you'll encounter a "Climate Chorus" and a personal welcome. Inside, you will sample the diversity of Melbourne foods, accompanied by a DJ playing an all-Australian mix, with short "toasts" and "climate reports" by special guests from around the world. Foods along the Walk: ANZAC biscuits, miso soup (served in your PSi22 KeepCup), a savory surprise, and a taste of local beer. At the Meat Market: wood-fired pizza, falafel, tofu and pork bao, sushi, and hoppers with vegetable curry, concluding with traditional Australian lamingtons.

The event showcases Melbourne's diverse food culture, celebrates those who make PSi22 possible, and checks in on global climates in many manifestations.

19:00-20:00 (or at the lecture's conclusion), informal groups depart to process along Royal Parade

19:30-22:30 Later arrivals should come directly to the Meat Market, 7 Blackwood Street, North Melbourne, 3051

Also curated by Spatula&Barcode for the PSi #22 Conference:

Foodwalks

Local guides offer "Foodwalks" to share their unique perspectives on the local food culture. Your small group might eat in a local restaurant, in someone's home, or around a campstove in a park. It will be possible to rejoin the conference for afternoon sessions. There's no cost to book a foodwalk, but most involve food expenses, typically around \$20AU, and some require you to purchase a bus/tram pass.

PRE-BOOKING IS ESSENTIAL; speak with a Spatula&Barcode representative or register online.

Date: July 9th

Time: 12:30-2:30

Location: Departs from Arts Hall

Richard Frankland

*Wilin Centre for Indigenous Arts and Cultural Development,
University of Melbourne*

What do We Mean by Climate?

There are two parts to the question of climate change for indigenous people – to consider the climate we live in, and the lack of access to the issues. At the moment, there is an inability to contribute to climate discussions because of the cultural loads that indigenous people carry which place them in perpetual victim survivor mode. We have lost our land and our voice, and now we have cultural obligations to the maintenance and renewal of communities.

This talk will reflect on cultural safety, and the trauma of living as indigenous persons in Australia. How do we challenge dominant cultural perspectives on climate when the social climate for indigenous people is yet to enter the climate debate. From the perspective of a Gunditjmarra elder, Professor Frankland will consider how staying connected to the indigenous world view is not a choice but an obligation.

Richard J. Frankland is Head of Curriculum and Programs at the Wilin Centre for Indigenous Arts and Cultural Development, and one of Australia's most experienced Aboriginal singer/songwriters, authors, playwrights and film makers. Born in Melbourne, but raised mostly on the coast in south-west Victoria, Richard is a proud Gunditjmarra man who has worked as a Soldier, Fisherman, and Field Officer during the Royal Commission into Aboriginal Deaths in Custody. His extensive body of work includes award winning documentaries "Who Killed Malcom Smith?", "No Way to Forget", "After Mabo", "Harry's War" and "The Convincing Ground". He has also written and directed for stage, including "Conversations with the Dead" (2002) and "Walking into Bigness" (2014). For a full list of Richard's achievements, go to <http://www.richardfrankland.com>.

Date: July 6th

Time: 9:30 - 11:00

Location: JH Michell Theatre – Richard Berry Building

Peta Tait

La Trobe University & University of Wollongong

Performing Species Kinship and Strange Emotions

This paper considers how theatrical performance – which seems especially anthropomorphic – can productively contribute to current concerns about species and habitat survival under threat of global warming. It explores what live performance offers emotional understanding of climate change at this time and vice versa. Artistic works, however, that capture the panic and anxiety of responses to climate change through texts of despair and fear merely confirm the need to mourn for the future, while texts calling for hope can struggle to be convincing. Alternatively, live performance and its study offers a way to explore the malleability and direct manipulation of emotion and bodily affect within socio-political ecologies and engagement with nonhuman species.

Performance that unfolds through bodies moving spatially, intrinsically understands what Merleau-Ponty explains about the human animal body: "[T]he flesh of the body makes us understand the flesh of the world" (2003: 218). Recent performance that expands into the environment in provocative ways suggests an anthropomorphic radicalism arising with and through the flesh of sensory and emotional feeling. This 'eco-phenomenology' diverges from the new materialist turn to impersonal (cellular) energy and devolved matter, indicative of scientific knowledge. But it needs performance-makers and performance studies to rethink predictable and pre-existing patterns of affective relations and cross species families. Performance phenomenologies can challenge cognitive and affective species blindness to human hubris and destructive arrogance by reconfiguring emotion within the ways bodies spatially shape a 'strange kinship' with other animals and the nonhuman.

Peta Tait FAHA is Professor of Theatre and Drama at La Trobe University and a Visiting Professor at the University of Wollongong. She was elected to the Australian Academy of the Humanities in 2013 and was on the PSi executive 2005–9. Peta is a playwright and an academic scholar of drama, theatre and performance studies, and currently publishes on body-based arts and phenomenology, interspecies art works, and cultural languages of emotion and affect. Her recent books include: *Performing Emotions* (2002); *Circus Bodies* (Routledge 2005); *Wild and Dangerous Performances: Animals, Emotions, Circus* (Palgrave MacMillan 2012); and *Fighting Nature: Travelling Menageries, Animal Acts and War Shows* (Sydney University Press 2015).

Date: July 7th

Time: 11:00 - 12:30

Location: JH Michell Theatre – Richard Berry Building

Plenary Panel - Listening to Country 2

Marrugeku Theatre will be in a panel discussion with artists and scholars to talk about *Cut the Sky*. Speakers include Aboriginal artist, Edwin Mulligan, scholars Charles Ahukaramu Royal, Helen Gilbert, University of Technology Sydney and Co-Artistic Directors of Marrugeku Theatre, Dalisa Pigram and Rachael Swain. The discussion will be moderated by artist, David Pledger.

Dalisa Pigram and Rachael Swain

Marrugeku

Butterflies and Burning Trees — Dramaturgies of the Anthropocene

Te Ahukaramu Charles

Te Papa

Thoughts on Indigeneity

Helen Gilbert

University of London

Deep Time, Slow Violence, Haunted Lands

Edwin Lee Mulligan

Marrugeku

Edwin will present one or two of his poems from the performance *Cut the Sky* and discuss his process of writing poems and painting, drawing on his dreams of his spirit country.

Date: 8 July 2016

Time: 3:30 – 5pm

Location: Meat Market, 5 Blackwood Street, North Melbourne

Rebecca Schneider

Brown University

Extending a Hand: Gesture, Duration, and the Posthumous Turn

What is the durational reach of gesture? Thinking about call and response, or hail and acknowledgement, Schneider asks: How long can call lie in wait for response? How far can a hail extend? Schneider looks at contemporary art works emphasizing gesture and hands but also at negative hand prints at Paleolithic cave sites to address questions of agency and “inter(in)animacy.” Rethinking the limits of “liveness,” this paper stresses an interval, and vulnerability, between nonhuman matter and flesh in which flesh and stone co-constitute each other. The essay follows the argument that it may be more generative to talk in terms of the posthumous than the posthuman, inhuman, or nonhuman, thus reframing the Humanist investment in “life.” Taking up hands in terms of posthumous life, Schneider asks: If hands are vehicles of extension, what is extended in extending a hand? If we can be done with the limits of “representation,” what about the slippery skin of mimesis as rock touches (or enters) hand, hand rock? Today, in our archives and practices of preservation, we can only touch bits of ancient or prehistorical art through the thin sheets of plastic that are surgical gloves. Tossed in the garbage after each encounter, where do those hands go? Can thinking about gesture, circulation, and the (non)extended live help us reconsider our response-abilities to the planet as a whole?

Rebecca Schneider is Professor of Theatre Arts and Performance Studies at Brown University and author of *Theatre and History*, 2014; *Performing Remains: Art and War in Times of Theatrical Reenactment*, 2011; and *The Explicit Body in Performance*, 1997. She is the author of numerous essays including “Hello Dolly Well Hello Dolly: The Double and Its Theatre,” “Solo Solo Solo,” and “It Seems As If I am Dead: Zombie Capitalism and Theatrical Labor.” She is co-editor of *Re:Direction*, and of the book series “Theatre: Theory/Text/Performance” with University of Michigan Press as well as a special issue of *TDR on Precarity and Performance* (2012).

Date: July 9th

Time: 11am-12:30pm

Location: Old Arts Lecture Theatre, Old Arts Building

Late Night Talks at Arts House

As part of PSI #22, Arts House will host three dialogue sessions at Meat Market featuring conversations between science researchers from the University of Melbourne and international performance scholars.

Location: Meat Market, 5 Blackwood Street, North Melbourne

Tickets: Admission is free.

Late Night Talk # 1

Dr Joelle Gergis

University of Melbourne
with

Professor Edward Scheer
University of New South Wales

Wednesday 6 July, 9-10 pm

Late Night Talk # 2

Professor Richard Eckard

University of Melbourne
with

Professor Maaïke Bleeker
Utrecht University

Thursday 7 July, 9-10 pm

Late Night Talk # 3

Professor Kate Auty

University of Melbourne
with

Professor Richard Gough
Falmouth University

Friday 8 July, 9-10 pm

Sustainability at PSI #22

PSi#22 is a climate friendly event. Each registration fee includes a AU\$2.25 carbon offset fee which has been matched by PSI22 Conference Organisers. The offsets purchased through Climate Friendly will support the Nam Ngan Small Hydro Project in Vietnam.

The conference will limit the printed material distributed to attendees to a simple, sustainably printed pamphlet outlining the conference. All other program material will be distributed online in a searchable document to be accessed by smart phone, tablet or laptop.

Every registered attendee for the conference will also receive a KeepCup, a colourful, unique, Melbourne-made 'to go' mug. Curated by Spatula&Barcode as part of their assistance with conference hospitality, the KeepCups will allow the conference to drastically reduce the amount of landfill waste associated with tea/coffee service during the conference.



PSi #22 Organising Committee

Co-ordinator: Eddie Paterson

Committee: Rachel Fensham, Paul Rae, Robert Walton, Alyson Campbell, Peta Tait, Angharad Wynne-Jones & Sarah Balkin

Conference Organiser: Melinda Hetzel
Communications Manager: Asher Warren

Communications Assistant: Lara Stevens

PSi Board

Maaïke Bleeker, Imanuel Schipper, Sarah Bay-Cheng, Sean Metzger, Heike Roms, Peter Eckersall, Kevin Brown, Bree Hadley, Shen Liang, Lindsey Mantoan, Efrosini Protopapa, Johanna Householder, Arseli Dokumaci, Antje Hildebrandt, Yu Homma, Jazmin Llana, Katerina Paramana, Eddie Paterson, Chiayi Seetoo, Caroline Wake

09:30-11:00 Keynote: Richard Frankland – What do We Mean by Climate? - Old Arts Public Lecture Theatre

BREAK 11:00-11:30

to vector to idle - **Lagoon Walk 07:00am** Old Arts (2h) Louisa King and Saskia Schut

Time	Macmahon Ball Theatre	Theatre B	Theatre C	Theatre D
11:30-13:00	Public Smog Chair: Lara Stevens	Ordinary Talk and Intimate Listening Chair: Martin Welton	The Maldives Exodus Caravan Show Chair: Søren Dahlggaard	Food Cultures and Sustainability Chair: Michael Peterson
PS 1,2	Danielle Wyatt Haze on YouTube	David Cross Performance, Anecdote and the Veracity of Truth	Amani Naseem, Mark Harvey & Søren Dahlggaard	William Peterson The Cultural Dimensions of Food
	Katherine Allen Looking Through Smog	Asher Warren Pleasant Climes and Ecologies of Scale in <i>I Think I Can</i>		Josh Abrams Staging Sustainability: Climates from Land to Tabletop
	Hartmut Veit Rising from the Coalface	Rajni Shah A Listening Atmosphere		Richard Gough Title TBC
LUNCH: 13:00-14:00				
14:00-15:30	New Approaches to Nature and Event Chair: Maaike Bleeker	Performance of and with the Elements Chair: Sharon Mazer	Land Affected by Emotions Chair: Hayato Kosuge	Disaster, Resilience, Critique Chair: Jazmin Llana
PS 1,3	Stephen Muecke Picture that Cyclone	Campbell Drake Tuning Space	Takashi Morishita Hijikata's Butoh and the Climate in His Memory	Ella Parry-Davies Mazboot: Precarious Performance and the Life of Lines
	Annette Arlander Working with the Weather	Michael Sakamoto Soil: Crisis, the Cultural commons and Performing Southeast Asia in America	Yu Homma Connecting the Cultural Narratives: Performance/Conference, Narrative and Land	Vanessa Ebron-San Juan Narratives of Resilience in High-risk Disaster Areas in Luzon
	Natasha Lushetch Digital Climates: Space, Time and Matrixed Change	Vincent Roumagnac The Theatre Season: Staging and Speculating Seasons on the Brink of Ecological Collapse	Arihiko Matsuzawa and Takahiro Niibe Recording and Editing Performances and Conference on Land of Emotions in 5 Days	Jazmin Llana Castigating Hope amidst Disaster: Serious Pun in PEIA's <i>Rak of Aegis</i>
BREAK: 15:00-15:30 Arts Hall - (Old Arts)				
16:00-17:30	Politics of the Commons Chair: Lauren Kooistra	Generational Performances Chair: Joel Anderson	At Sea Chair: Mark Harvey	Sacred Encounters, Embodied Realities Chair: Kara Miller
PS 1,4	Heather Davis Towards an Atmospheric Commons	Gary Anderson, Sandra D'Urso The Family Activist Network: Join us in Imagining a Carbon Neutral Future for PSI	Janine Randerson The Cold Song: Tanumanga for the Pacific Ocean	Sami L. A. Akuna Next Stop Mauna Kea, Sacred Destininations To the Stars
	Serap Erincin Performing the Right to Commons: Environmental Protest Performances in Turkey	JuanAnn Tai Title TBC	Amanda Yates <i>Performing Change</i>	Kara Miller Habitat
	Mina Rahimian Design Paradigms for Energy Commons	Matt Debridge Performance Habitats for an Aging World	Carol Brown From Cartography to Choreography	Moana Nepia Atmosphere as Embodied Reality
				Christine Maxwell Dance and Environmental Activism Through Social Media

Arts Hall - **Panoramic Climates: an accumulative exploration of mobile image-making performances** - Kaya Barry

PARALLEL PANELS ON DAY 1 CONTINUE ON NEXT PAGE

09:30-11:00 Keynote: Richard Frankland – What do We Mean by Climate? - Old Arts Public Lecture Theatre

BREAK 11:00-11:30

to vector to idle - **Lagoon Walk 07:00am** Old Arts (2h) Louisa King and Saskia Schut

Time	North Lecture Theatre	South Lecture Theatre	CL Space 2 – 257	CL Space 3 - 143
11:30-13:00	Extreme Weather and Climate Change Theatre Chair: Denise Varney	Dancing Performance Climates I Chair: Katherine Mezur	Digital Selves and Posthuman Sexualities Chair: Rosie Klitch	Political Climates, Activist Atmospheres Chair: Robert Walton
PS 1.2	Catherine Diamond Staging Doom and Relishing the Bad News: Interrogating the Popularity of <i>Ten Billion</i>	Evelyn O'Malley Tonnai Thorai: Dancing as the Tide Comes In	Evelyn Wan Performing, Tracking, Counting: Quantified Selves and Uncounted Bodies in Data Environments	K. Frances Lieder Performing Ordinary Crisis: A Climate of Sexual Violence in Modern Urban India
	Campion Decent <i>Embers</i> : 'the fire creates its own weather'	Katherine Mezur Water Gesture and Tidal Change: From Japan to California and Back	Sarah Lucie Transcending Corporeal Boundaries: Nina Arsenault's Modeling for the 21st Century Subject	Serap Erincin Performing Humor in times of Crisis: Graffiti, Cartoons, and Environmental Activism
	Belen Calingacion The VMCI Community Mobile Theatre: A Voice for Climate Change in the Margins	Tanja London Screenance as Climate Activism	Michael Morris Resources of Ecosexuality: Performing Commitment and Care, Pursuing Extinction	Diana Smith Atmospheres and Waves: Performing Feminist Climates
LUNCH: 13:00-14:00				
14:00-15:30	Cultural Activism and Climate Politics Chair: Marnie Badham	Dancing Performance Climates II Chair:	Reception Studies and Audience Atmospheres Chair: Robin Loon	Climate Activism and the 2015 Paris Climate Conference Chair: Helena Grehan
PS 1.3	Beate Schappach Playing with Politics, <i>San Francisco</i> (De warme Winke) as Intersection of Politics and Aesthetics	Wei Zhang Chinese Contemporaneity and Climate: Dance Vocabulary and Choreography in China's Transition	Caroline Helm Audiences Performing Community: Rising Temperatures as Spectators Sit "apart together" in the Twenty-First Century Theatre Auditorium	Tobias Mandelson Galvin Paris COP21 as Event
	Robin Davidson Is the Planet Being Oppressed? Adapting Theatre of the Oppressed to Address Climate Change	Angela Viora Soundscape Portrait or Mapping the Sound	Tharanga Dandeniya Cultural Coordination and Orientation: Creating a Performance Atmosphere for Audiences' Reception.	Sumugan Sivanesan Choreography of Disobedience and the Present Culture of Climate Change.
	Tom Gutteridge Rehabilitating Risk	Sarah Cameron Sunde & Sasha Petrenko 36.5 / A Durational Performance with the Sea	Cheryl Stephenson Otakar Zich and the Origins of Czech Puppet Theory	Alexa Taylor Re-framing Global Climates: Olfaur Eliasson, Mel Chin, and Civil Disobedience at ArtCOOP21
BREAK: 15:00-15:30 Arts Hall - (Old Arts)				
16:00-17:30	Protest, Labour, Risk Chair: Stephen Muecke	Institutions, Citizens, Activism Chair: Bree Hadley	Interventionist Performance Practices Chair: Mick Douglas	Art, Activism and the Performance of Climate Change Chair: Ray Langenbach
PS 1.4	Sandra D'Urso Securitarian Climates: Policing Women's Performance Art in the 21st Century	Thomas Payne Towards Hydrocitizenship	Olivia Webb <i>The Choir of the Self</i> : How to Listen and Speak Simultaneously	Sarah Blissett Fuelling Art Activism
	Sarah Rodigari <i>Going Nowhere</i> and Affective Labour in Live Performance	Derek Goldman Our One Earth: A Global Performance Initiative	Hugh Sillitoe Absurd Performance and Climate Justice	Sarah Ann Standing 350.org as a Localized Trans-Global Movement
	Alissa Mello Beyond Protest: Material Performance as Contemporary Activism	Imanuel Schipper World Climate Conference	Julie Shearer Time and Tide: Performing Bodies in Peril in Response to Climate Change	Perdita Phillips Walking Underways/Egeways After Disaster

CL Space 4 - 116 - **After Performance Longtable - Felipe Cervera, Matthew Voxall, Alvin Lim and Ella Parry-Davies**

PARALLEL PANELS ON DAY 1 CONTINUE ON NEXT PAGE



09:30-11:00 Keynote: Richard Frankland – What do We Mean by Climate? - Old Arts Public Lecture Theatre

BREAK 11:00-11:30		to vector to idle - Lagoon Walk 07:00am Old Arts (2h) Louisa King and Saskia Schut		George Paton Gallery	
Time	CL Cecil Scutt	Elearning - 156	Elearning - 204	Guild Theatre	George Paton Gallery
11:30-13:00	Systems, Situations and Participation Chair: Gunhild Borggreen	Staging Participation Chair: Tony McCaffrey	Fire, Weather, Debris Chair: Ken Takiguchi	Dance Microperformance Workshop	Performing New Climates: The Stories of Asylum
PS 1.2	Solveig Gade Unbound Climates of War: Rimini Protokoll's <i>Situation Rooms</i>	Maria White Reimagining Democracy Through Performance in Australia	Gretel Taylor and Artists of Environmental Performance Authority Bodies of Affect: Responding to Site and Situation	Angela Clarke The Performative Climate of the Body	Priya Srinivasan and Arun Munoz
	Suzanne Little Affective Atmospheres and Performance	Eugene Van Erven What if it Rains, or Worse?	Dennis Gupa Alta(r)ing the Debris: Transforming Lament from the Wreckage of Super Typhoon Yolanda/Haiyan	Sean McLeod	
	Briony Barr Drawing on Complexity: Modelling Complex Systems through Collaborative Drawing.	Ana Vrtovec Beno Lay Theater Productions and Outdoor Performances in Slovenia	Ana Serrano Score for Landscape	Bruce Barton Weathering 'Embrace': Affective Narratives in Micro Performance	
LUNCH: 13:00-14:00					
13:30-15:00	Risk, Media, Litigation Chair: Ed Scheer	Queer Ecologies Chair: Lim How Ngean	Ecology, Disaster Chair: Meredith Rogers	An Animal Response Workshop (max. 15 participants)	Air Atmospheres
PS 1.3	Nicole Rogers 'This changes everything': The Role of Litigation and Protest in Tackling Climate Change	Hans Vermey (The Theatrical?) Queer Art of (Eco) Failure.	Ma Rosalie Zerrudo The Unconscious: A Non-Performance Dance Ritual	Christy Gast & Camilla Marambio	Malte Wagenfeld Air and Atmosphere
	Kimberly Richards Branding the City: The Calgary Stampede and the Performance of Volunteerism in the Year of the Flood	Jess Oliveri and Anni Puolakka Had Birth Set Ex: Bathe Third Sex: Death Births XI	Sarah Treadwell Blotting up Matter: Architectural Drawings of an Oil Spill		Wunderkammer Entrance alcove to Theatre D PSI Future Advisory Board (FAB) Daytimes Throughout conference
	Christian Nagler Living in the Model: Risk Management and the Global Imaginary		Majid Sarnayzadeh Study of Performativity of Red Tide		
BREAK: 15:00-15:30 Arts Hall - (Old Arts)					
15:30-17:00	Power and Performance: Art and Ecology in an Age of Consensus Politics	Theatrical Events and Processes Chair: Jane Woolard	Detritus Chair: Paul Rae	Performing Climate-Think	17:30-18:30 Launch of Global Performance Studies Journal (GPS) and George Paton Gallery program: Meredith Rogers, Maaike Bleeker and Kevin Brown
PS 1.4	A Panel of Members of the the Research Project 'Power and Performance: Revaluing Theatre in the 21st century'	Natalie Driemeyer Climate Change has Assumed Dramatic Dimensions – But Can it Also Be Rendered on Stage?	Taub Myer Performing the Art of Waste	The Dig Collective Double Speak	
	Peter Eckersall Helena Grehan Eddie Paterson Edward Scheer	Annalaura Alifuoco Becoming Grounds: Ana Mendoleias Geographies of Cosmic Love	Kim Sargent-Wishart Trash & Treasure	Petra Kalive Oil Babies	
		Linda Hassall Evolving Theatrical Landscapes– Performance and Climate Change	Branislav Jakovljevic Petit-Jean Saw it Coming: Lacan's Sardine Can and the Great Pacific Garbage Patch		

Room 152: Quiet room - Kristine Posner - Open reflective space



Time	Macmahon Ball Theatre	Theatre B	Theatre C	Theatre D
09:00-10:30	Performing the Americas across Space and Time Chair: Margaret Werry	Floating Platforms Chair: Anni Välimäki	Anthropo[s]cenic Probes, Actions & Encounters	Astroperformance Chair: Caroline Wake
PS 2.1	Maryrose Casey Wild Australia versus Wild America: Performing Great White Heroes and Authentic Savages on Tour. Sebastián Calderón Benthin Out of the Tropics: Psychedelic Performance in Contemporary Peru Daniel Ruppel Renaissance Performance Climates	Anni Välimäki & Floating Platforms work group Leena Kela & Kaisa Henttunen DARK ENERGY KITCHEN A recipe for the Universe :0.5 % radiation 4.5 % luminous ordinary matter 25 % dark matter 70 % dark energy.	Beth Weinstein and Dorita Hannah Performance+Design Working Group	Simo Kellokumpu Seasons as Choreographers: Where Over the World is Astronaut Scott Kelly? Felipe Cervera Space as Avant-Garde? Performance Research in the International Space Station Sara Morawetz How the Stars Stand
BREAK: 10:30-11:00 Arts Hall - (Old Arts)				
11:00 - 12:30 Keynote: Peta Tait – Performing Species Kinship and Strange Emotions - JH Michell Theatre – Richard Berry Building				
LUNCH: 12:30-13:30				
13:30-15:00	'I would prefer not': A Case Against Utility and for Listening' Chair: Camila Marambio	Uncertain Legacies: Artists and Scientists Collaborate to Consider Long Term Ecological Change Chair: Laurie Beth Clark	Anthropo[s]cenic Probes, Actions & Encounters(cont.)	Landscapes and Geologies Chair: Stephen Muecke
PS 2.3	Denise Milstein Useless Stories Camila Marambio Getting Lost in the Field Carla Macchiavello Care, Curiosity and Curating	Alison Mickulyuk and Jojin van Winkle Sense of Place Along the Namekagon River Chelsey Blanke and Helen J. Bullard Be Like the Lake Sigrid Peterson Arts-Science Collaboratio	Beth Weinstein and Dorita Hannah Performance+Design Working Group	Gemma Savio IT TAKES WORK TO GET THE NATURAL LOOK João Florêncio Rock/Body: Performative Interfaces Between the Geological and the Body Megan de Roover Seeking the Southwest: Unpacking Environmental Encounters in Central Arizona
BREAK: 15:00-15:30 Arts Hall - (Old Arts)				
15:30-17:00	Landforms and Waterbeds: Salt, Mud, Ice Chair: Annette Arlander	Performance Communities Chair: Hayato Kosuge	Wunderkammer	Love and Information: Theatre and Big Data Chair: Anna Scheer
PS 2.4	Kate Church In_Land Time Matteo Bonfitto The Performer as a Practical Philosopher: Mariana's Case Shannon Young Basin Ambulations: Lake Mungo	Emma Willis Against the Tidal Forces of the Day: Iddiorhythm, Communities, and the Syncoated Subject Shinya Takahashi Dancing with Spirits in Animated Climates in Japanese Performing Arts Anna Loewendahl Amateur & Industry: Locating Love & Labour in a Post-arts for arts sake Climate	Entrance alcove to Theatre D PSi Future Advisory Board (FAB) Daytimes Throughout conference	Paul Rae Cate Blanchett's Manifesto of Futurist Finance Ed Scheer Performance and Big Data: Ten Theses on <i>Manifesto</i> Eddie Paterson and Imanuel Schipper Big Data Dramaturgy

Time	North Lecture Theatre	South Lecture Theatre	CL Space 2 – 257	CL Space 3 - 143
09:00-10:30	Cityscapes, Streetscapes Chair: Shannon Steen	Intimate Distances: Radical Acts of Extended Time and Expanded Place in Location Performance Chair: Katherine Mezur	Performing Response-abilities: Fleshy Encounters in a Time of Ecological Crisis Chair: Hayley Singer	Body, Performance, Place Chair: Jazmin Liana
PS 2.1	Chris Braddock A Call to Silence	Gunhild Borggreen Shared Communities? Art Intrusions at Echigo-Tsumari Art Triennale	Hayley Singer Exquisite Corpse: A Textual Dissection of the 'Fleischgeist' and a Multispecies Assemblage	Stuart Grant Being Performed by Place
	Ken Hagiwara The Production <i>100% Tokyo</i> and the Socio-Political Atmosphere in the Japanese Capital	Katherine Mezur Rocking Out on "Two Islands": Extending Time in the Strange Places of Ai Weiwei and Cai Guo-Qiang	Sue Pyke Flesh Wounds: The Climate for Literary veganism and the Prey of the Carnivorous Divine	Jane Woolard The Dramatic Hemisphere: The Habitat of the Performer on the Sydney Stage in the 1830s and 1840s.
	William Feuerman and Phu Hoang The Optics of Weather	Rurihiko Hara Nature's Own Performance - Fujiko Nakaya's Fog and Garden Kimberley Jannarone The Global Media and Gymnastics: Controlling the Climate of Mass Performance	Lynn Mowson Fleshy Climes	Jonathan W. Marshall Site as Performance: The Ring of Brodgar and the Performative Turn in Archaeology.
BREAK: 10:30-11:00 Arts Hall - (Old Arts)				
11:00 - 12:30 Keynote: Peta Tait – Performing Species Kinship and Strange Emotions - JH Michell Theatre – Richard Berry Building				
LUNCH: 12:30-1:30				
14:00-15:30	Cultural Agency and New Dramaturgies: Youth Arts Performance Chair: Eugene Van Erven	Old Arts Quad - Chris Braddock & Olivia Webb - Skull Acoustics workshop		
PS 2.3	Sarah Austin New Dramaturgies and Aesthetics in Contemporary Performance with Young People	Interspecies Performances Chair: Lynn Mowson		
	Hannah Liddeaux Cultural Agency, Difference and Inclusion in Contemporary Performance with Young People	Tuija Kokkonen Interspecies Performance, Competitiveness and Weak Action		
	Alex Walker The Sanctuary: Young People, the Future and Cultural Citizenship in Performance	Angela Campbell I, Animal		
		Minty Donald The Performance Apparatus: Performance and the Performance Score as Ecological Practice		
		Barbara Campbell When Birds Speak Through Humans		
		Angela Viora Dwelling Through Performance Art		
BREAK: 15:00-15:30 Arts Hall - (Old Arts)				
15:30-17:00	Art, Pollution and the Sea Chair: Sandra D'Urso			
PS 2.4	Laura Bissell Performing Seas			
	Diana Looser Total Immersion? Connecting with Climate Change in <i>Crossing the Tide</i> (Tuvalu Pavilion) at the 2015 Venice Biennale			
	Sean Metzger Affect, Theatricality, and the Anthropocene			

Time	CL Cecil Scott	Elearning - 156	Elearning - 204	Guild Theatre	George Paton Gallery	Arts Hall
09:00-10:30	Climate Change on Stage Chair: Suzanne Little	Mobility, Migration, and Statelessness Chair: Helena Grehan	How Do Climates Perform? Co-Chairs: VK Preson & Ioana Jucan	Fluid States Informal Meeting	Performative Exchange	Joy Ride
PS 2.1	Greg Pritchard Not Silent in Gehenna	Veronica Tello Enduring/Performing Crises of Statelessness	V. K. Preston Climatic Performatives: Witches, Precipitation, Performance	Marin Blazevic & organisers & participants of Fluid States - PSI 2015	Anny Mokotow and Bridget Nicholson	Mark Harvey
	Mohebat Ahmadi Staging Climate Change in the 'Posthumanist Performativity' of <i>Sila</i> by Chantal Biodeau	Kristin Fiade To Exist is to Resist - Cultural Work of the Jordan Valley Solidarity Campaign	Siri Veland Between the Mega-Narrative and the Palimpsest—Performing Narrative Materiality at the Ice Edge	Exhibition celebrating ASA award winners Back to Back Theatre Days 1-3 Throughout conference during daytimes	Various Times Throughout the Day	
	Maggie Ivanova Theatre Laboratory Stumato's <i>Medea, My Mother</i> (2013): On Mothers, Children and Sustainable Future	Annelis Kuhlmann The Human Turn in Performance as Climate Factor: 'Bürger:scene', 'Festuge', and 'Caravan Next'	Ioana Jucan Performance from Outer Space: Knowledge and Action on the Global Scale			
BREAK: 10:30-11:00 Arts Hall - (Old Arts)						
11:00 - 12:30 Keynote: Peta Tait – Performing Species Kinship and Strange Emotions - JH Michell Theatre – Richard Berry Building						
LUNCH: 12:30-13:30						
13:30-15:00	Nature, Water, Land Chair: Branislav Jakovljevic	Inconvenient Communities Chair: Bruce Barton	How Do Climates Perform? (cont.)	(Re)presenting FLUID STATES	Shitting Glitter	
PS 2.3	Jen Plants Can our Relationship to Water be Defined as a Performance?	Malcolm Whittaker The Work of Facilitating and Supporting an Experience of Ignorance	Ongoing discussion	Marin Blazevic & organisers & participants of Fluid States - PSI 2015	Julia Havard Shitting Glitter and Tracing Touch: Glitter Pills and the Queer Remaking of the Surface	
	Alba Vieira How Might Artistic Dance Works Increase Audience's Awareness of the Urgent Need to Preserve Natural Environments?	Charlene Rajendran and Prue Wales An Inconvenient Grief: Staging Death and Denial in <i>Both Sides, Now</i>				
	Helke Salzer Title TBC	Emma Hughes Maternal Ambivalence in Hammie Rayson's <i>Inheritance</i>				
BREAK: 15:00-15:30 Arts Hall - (Old Arts)						
15:30-17:00	Sustainable Resourcing: Technologies, Concepts, Affects Chair: David Cross	AT THE GEORGE PATON GALLERY		Body Acoustics (Workshop)	Do you Hear it Sing?	Time and Space TPG NOMAD
PS 2.4	Sasha Gbich Melancholy and Hopefulness in the Climate Century	All Day	Chris Braddock & Olivia Webb	Marin Blazevic & organisers & participants of Fluid States - PSI 2015	Jane Woollard and Kit Lazaroo A new play exploring habitat and environments by Kit Lazaroo	Angharad Wynne-Jones, Katie Sfetkidis, Greg Pritchard & Gideon Obarzanek
	Ian Garrett Rethinking Scenography for Renewable Energy	The Haunting Project Vic McEwan and George Main				

Room 152: Quiet room - Kristine Rosner - Open reflective space

Time	Macmahon Ball Theatre	Theatre B	Theatre C	Theatre D
09:00-10:30	Suspensions of Agency: Indifference, Deadpan and the Infratheatrical	Climate Change, Celebrity	Special Event: Back to Back Theatre in Conversation Chair: Peter Eckersall	Expanded Sceneography I Chair: Tanya Beer
PS 3.1	Sarah Balkin Deadpan Performance Paul Rae (Chair) Infratheatre Martin Welton Indifferent Atmospheres: The Silent Transformations of Rosemary Lee's <i>Meltdown</i>	P. David Marshall "Une Geste Suffit": Environmental Meta-narratives, Public Personas and the Play of Gesture, Agency and Performance of Caring Glenn D'Cruz (Chair) Waleed Aly as Climate Change Warrior Sharyn McDonald Leveraging off Al Gore's Persona in the Fight against Climate Change Kim Barbour (Remote Presentation) - The Performance of Community Activist: Networked Persona and Everyday Change-Making	Bruce Gladwin, Alice Nash & Back to Back ensemble members For almost thirty years, Back to Back Theatre has been making work the tests the boundaries of performance, performers and audiences as well as the assumptions we make about all three.	Imanuel Schipper Staging the World Climate Conference and other Recent Narrative Plays of Rimini Protokoll Majju Loukola and Liisa Ikonen Peripheral Sceneographics Beth Weinstein Prone to Collapse
BREAK: 10:30-11:00 Arts Hall - (Old Arts)				
11:00-12:30	Gender and Ecology: Art, Criticism, Activism	Tight Places: Environments of Improvisation, Labor, Precarity, and Freedom Chair: Peter Eckersall	Enclosures Chair: Maryrose Casey	Expanded Sceneography II Chair: Ian Garrett
PS 3.2	Liz Conor ClimActs at COP21, Paris Denise Varney (Chair) Climate Guardians as Ecofeminist Performance Lara Stevens Robyne Latham's 'The Aborigine is Present'	Eylül Fidan Akinci Immaterial Dramaturgy and Spectator's Labor Ugoran Prasad The Physical Turn and Performance Ecology Özgül Akinci Performing One's Prostitute-Persona: Affective Labor of Intimacy in Sex Work and Performance	Josephine Wilson Toxic Box Fernando Quesada The Nomos of The Earth Jock Gilbert and Sophia Pearce Title TBC	Tanya Beer Refugium: an Ecoscenographic Approach to Nurturing Environmental Stewardship Jennifer Tran The Foodspray Race Efterpi Soropos HUMAN ROOMS™
LUNCH: 12:30-1:30				
13:30-15:00	Social Climates Chair: Mark Harvey	Tracking through Tropical Performances: Dramaturgy in Hot and Humid Climes	Performing Techno-Cultures I Chair: Sarah Bay-Cheng	Expanded Sceneography III Chair: Tanya Beer
PS 3.3	Christina Houghton Performing Ecologies — The Art of Survival Kathy Waghorn Becoming Ultra-local Dieneke Jansen Dwelling on the State	Charlene Rajendran (Chair) Retracing Steps in <i>Both Sides, Now</i> : Dramaturgy as Dialogue and Collaboration Ken Takiguchi Translation and Dramaturgy in Asian Intercultural Theatre: Working Across Borders and Between Boundaries Lim How Ngean 'Sticky' Situations in Sweaty Climes: Dramaturgy and Choreographic Modernities Robin Loon Practice meets Pedagogy: The Centre 42's Apprentice Dramaturg Programme	Jennifer Parker-Starbuck A Personal Micro Climate of Human-Animal Labor: Laurie Anderson's <i>All the Animals and Heart of a Dog</i> Peter Eckersall Life in Postnature: Nonhuman Performances in the Radiation Zone of Fukushima Elizabeth Jochum Techno-Animal Effigies: Robots and Telepresence in Non-Human Performance	Ian Garrett Technological Haunting for the Time Shifting of Performance Gwenyth Dobie and William Mackwood Ralentando
BREAK: 15:00-15:30 (own arrangements on your way to the Meat Market)				
15:30 – 17:00 Plenary Panel: Listening to Country 2 – Dalisa Pigram, Rachael Swain, Te Ahukaramu Charles, Helen Gilbert & Edwin Lee Mulligan – Meat Market, 5 Blackwood Street				

PARALLEL PANELS ON DAY 3 CONTINUE ON NEXT PAGE



Time	North Lecture Theatre	South Lecture Theatre	CL Space 2 – 257	CL Space 3 - 143
09:00-10:30	Oceanic Currents Chair: Stuart Grant	Learning, Rehearsing, Dancing Chair: Anny Mbotkoto	Fluid States North	Cyberspace, Digital Duration Chair: Robert Walton
PS	Malin Palani Islands of Trash: The Indigestible Power of Plastics	Heli Aaltonen Performative Encounters with Climate Zone Taiga	Gry Worre Hallberg	Mateusz Borowski From Hives to Clouds: Emergent Affects in Cyberspace
3.1	Douglas and Trubridge Concurrent Practices: Navigating Environments and Open Collaboration	Antje Hildebrandt Choreography, Education, Space, Value: Florence Peake's <i>Fernake</i> (on campus)	Birgitte Bauer-Nilsen Siku Aapooq/Melting Ice	Magorzata Sugiera Reel Nature
		Anja Ali-Haapala <i>Working and Performed Rehearsal: A Case Study of National Dance Company Wales.</i>		Jane Frances Dunlop Talk to You Later: Address and Atmospheric Affect in Internet-situated Performance
BREAK: 10:30-11:00 Arts Hall - (Old Arts)				
11:00-12:30	Theatre Ecologies Chair: Diana Looser	Rimini Protokoll & workshop participants	Distributed Deforestation Chair: Tom Gutteridge	Sonic Environments Chair: Matt Delbridge
PS	William Feuerman and Joanne Paterson Kinniburgh	Screening of World Climate Conference, and Lecture Presentation	Lucia Monge Planión Móvil: Interspecies Collaboration in the Walking Forest	Christopher Wenn Acoustic Ecologies
3.2	Bree Hadley Mapping Changing Theatre Climates		Sharon Mazer See No Evil: 'Marama' and the Poetics of Deforestation in the South Pacific	Sam McAuliffe Reflecting the Environment through Improvised Musical Performance
	Jondi Keane and Rea Dennis The Atmospheric Intricateness of Practice-led Research		Rebecca Mayo Wearing Weeds: The Materiality of Art, Labour and Care on the Merri	Rosie Klich 'Tuning In and Sounding Out': Staging Sonic Environments
LUNCH: 12:30-1:30				
13:30-15:00	Performance Sites: Malls, Dumpsters, Lecture Halls Chair: Prue Wales	Rimini Protokoll & workshop participants	Skull Acoustics Workshop System Garden - Lucia Monge - Plants and Movement Workshop	
PS	Joel Anderson Title TBC	Screening of World Climate Conference, and Lecture Presentation	Rewilding Skyscapes Chair: Kimberley Jannerone	
3.3	Yasmine Jahanmir High Heels and Dumpster Pools: Synchronized Swimming as Public Intervention		Andrew Goodman Fragility, Flux and the Rewilding of Art	
	Kelly Doley & Diana Smith Sunday School: The Lucy R. Lippard Lecture		James Ball Immersive Spectatorship in James Turrell's Skyspaces	
			Reagan Matquez Examining Flow Through Performance: Ecotones in Tourist Zones	
BREAK: 15:00-15:30 (own arrangements on your way to the Meat Market)				

CL Space 4 - 116 - **After Performance Longtable** - Felipe Cervera, Matthew Voxall, Alvin Lim and Ella Parry-Davies

PARALLEL PANELS ON DAY 3 CONTINUE ON NEXT PAGE

Time	CL Cecil Scutt	Arts Hall	Elearning - 204	Guild Theatre	George Paton Gallery	Room 152: Quiet room - Krisztine Fosner - Open reflective space	
09:00-10:30	Body Acoustics (Workshop) Chris Braddock and Olivia Webb Body Acoustics	Discussion Room #1 Hosted by Spatula&Barcode	Organisms and Domestications Chair: Perdita Phillips Ray Langenbach "Should PSI have a Psychotropic Performance Working Group?"	Climate Monologues Chair: Jane Woollard George Catsi Spreading the Word	The Pro-crastination Project Kate Hunter & Deborah Leiser-Moore	Hauntings Project Vic McEwan & George Main	
PS 3.1			Kara Miller Dancing with the Animals at the Missa Gala Lisa Ikonen Domesticated? – The Wild Nature vs Pet (Supply) Industry	Mish Grigor The Scrub, the Bush, the Outback Cynthia Troup Undercoat: A Paradoxical Tale	Vic McEwan and George Main - Will speak about their project at 10:00		
BREAK: 10:30-11:00 Arts Hall - (Old Arts)							
11:00-12:30	Contested Environments Chair: Solveig Gade Alyssa Critchley Sydney's 'Illegal' Performance Venues: Thinking about What an Atmosphere Can Do Kat Maguire-Rosier Aestheticising Access in Live Integrated Performance Janet Gibson Narrative Places/Spaces: Changing Environments, Changing Minds	Discussion Room #2 Hosted by Spatula&Barcode	Climate Gaming Misha Myers (Chair), Bharath Palavalli & Dave Griffiths	Soils and Laboratories Chair: Josh Abrams Christy Gast Sarah Blissett Fuelling Art Activism Aviva Reed (with Patrick Belford) Soil Biome Immersion	The Pro-crastination Project Kate Hunter & Deborah Leiser-Moore	Hauntings Project Vic McEwan & George Main	
PS 3.2							
LUNCH: 12:30-13:30							
13:30-15:00	Storytelling, Oral Performance, Listening Chair: Meredith Rogers Molly Mullen Oceans Apart? Teaching Ecological Sustainability in Secondary School Drama Classrooms Sukanya Chakrabarti Title TBC Robert Lane Title TBC	Hungry for Art and Social Practice: The Politics and Performance of Melbourne Food Culture Chair: Marnie Badham and Robert Walton Laurie Beth Clark and Michael Peterson Foodways Federation Square and Foodways Melbourne Jen Rae and Dawn Woleski Fair Share Fare Angharad Wynne-Jones and Tara Prowse The Supper Club	Robot Matrix Chair: Sarah Bay-Cheng Aneta Stojnic Matrix Climate: Digital Dystopias of the Anthropocene Kevin Brown I, Robot (Approaching Singularity): Or, 'Every Body's Working for the Romba' Christel Stalpaert This Body is in Danger! Composite Bodies and Posthuman Prototypes in Action	Different Light Theatre Chair: Tony McCaffrey Members of A Different Light Theatre Three Ecologies of Different Light	The Pro-crastination Project Kate Hunter & Deborah Leiser-Moore	Hauntings Project Vic McEwan & George Main	
PS 3.3							
BREAK: 15:00-15:30 (own arrangements on your way to the Meat Market)							
15:30 - 17:00 Plenary Panel: Listening to Country 2 – Dalisa Pigram, Rachael Swain, Te Ahukaramu Charles, Helen Gilbert & Edwin Lee Mulligan - Meat Market, 5 Blackwood Street							

Time	Macmahon Ball Theatre	Theatre B	Theatre C	Theatre D
09:00-10:30	Ocean Ontologies, Atmospheres and Avant-Garde Art and Performance Chair: Rachel Fensham	Telepresence: Affect and Intimacy across Distances Chair: Hanne-Louise Johamessen	Gothic Atmospheres Chair: Paul Rae	Performing Techno-Climates II Chair: Jennifer Parker-Starbuck
PS 4.1	David Mence The Freedom of the Seas: An Early Modern Debate for the Twenty-First Century	Gurhild Borggreen, Beau Coleman & Gry Worre Halberg	Shannon Steen Reanimating Reanimation: <i>Frankenstein</i> and the Art and Science of Creation	Louis Philippe Demers Atmospheres and Machine Performers
	Anthony White The Movement of Water: Frank Stella and the Moby Dick Series		Margaret Werry <i>Very Still Life: Performance on the Frontiers of Animacy</i>	Kristof Van Baarle Places of Extinction: Posthuman Time and Space in the Work of Kris Verdonck
	Rachel Fensham Fashioning Feeling in <i>Ocean</i> (1994, 2008): David Tudor, John Cage, Marsha Skimmer, Merce Cunningham, Charles Atlas		Diana Looser Gothic Etchings, Pacific Visions: Meryon, Māori, and Stuart Hoar's Pāsefika	M. Cody Poulton Spectral Presences of Media and Machinery in Contemporary Japanese Performance
	Robyn Schofield The Southern Ocean's Atmosphere - A Scientist's Perspective			
BREAK: 10:30-11:00 Arts Hall - (Old Arts)				
11:00 - 13:00 Keynote: Rebecca Schneider – Extending a Hand: Gesture, Duration, and the Posthumous Turn - Old Arts Lecture Theatre				
LUNCH: 13:00-14:30 (Own arrangements) - OR for those who have booked, Spatula&Barcode FOODWAYS walks - meet at Arts Hall at 12:30				
14:30-16:00	How PSI Thinks	13:00-14:30 Arts Hall Strange Gardening Workshop: Cultivating the Futures of Performance Studies PSI Future Advisory Board (FAB)	A Glass Falls Off the Table: Nonhuman Performativity Chair: Peter Eckersall Mari Boyd The Edo Marionette Theater Youkiza and "Utushie Animation" Shintaro Fujii Mechanic Scenography as a Performer – On the Work of Robert Lepage Krisztina Rosner Object and Voice Software as Character: Vocaloid Opera Lady Aoi Eyiil Fidan Akinci Choreographed Objects: Geumhyung Jeong's Love Machines	
PS 4.2	Ray Langenbach, the Performance Climates Organising Committee and PSI members			
BREAK: Arts Hall - (Old Arts)				
CLOSING & DRINKS - Details TBA				

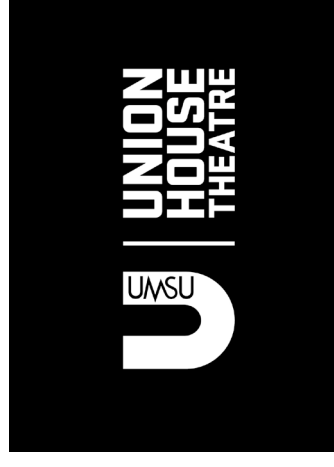
PARALLEL PANELS ON DAY 4 CONTINUE ON NEXT PAGE

Room 152: Quiet room - Krisztina Rosner - Open reflective space

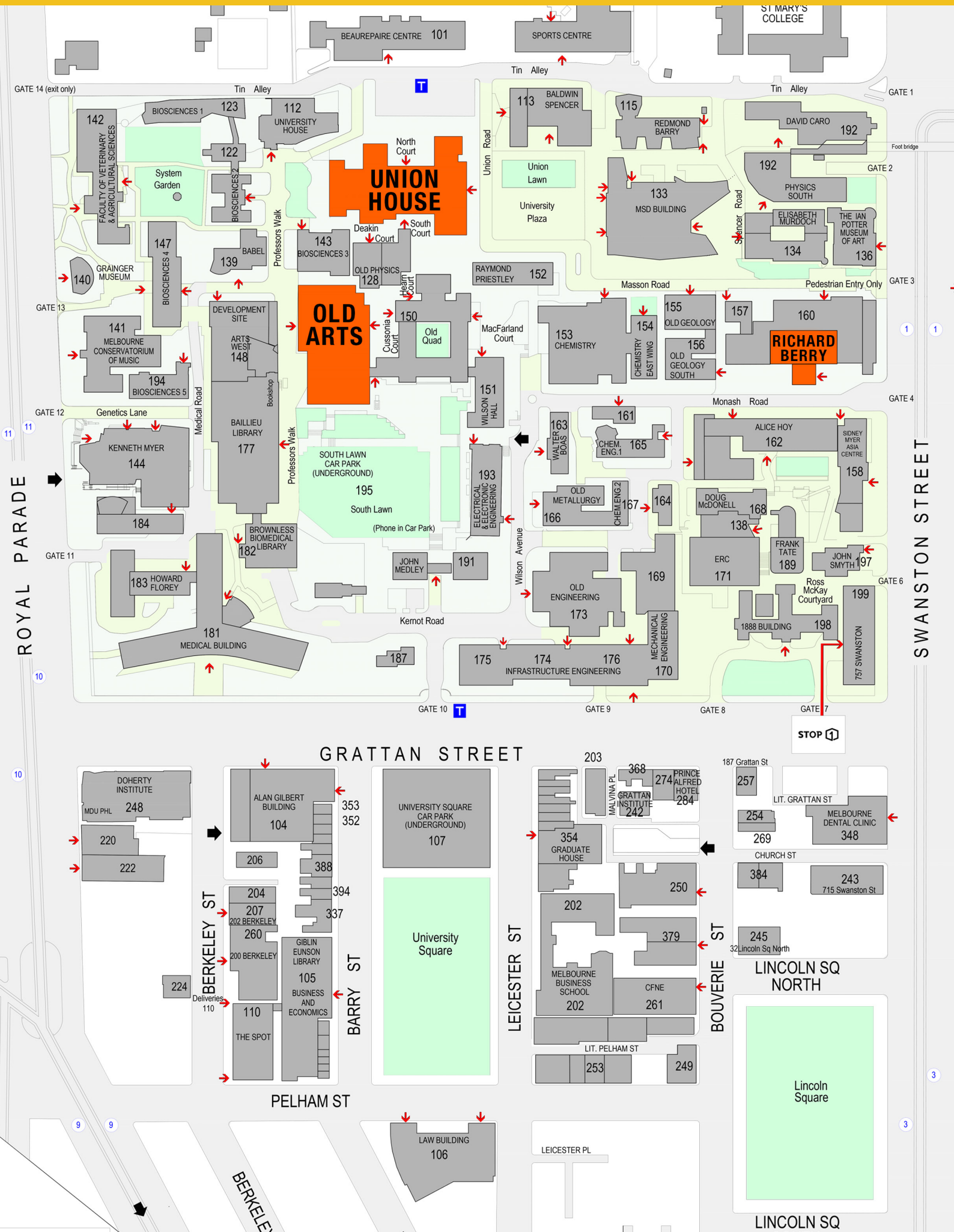


Time	North Lecture Theatre	South Lecture Theatre	CL Space 2 – 257	CL Space 3 - 143	CLSpace 4 - 116	CLCeil Scutt-227	Elearning - 156	Throughout conference during daytimes - Entrance alcove to Theatre D - Wunderkammer
09:00-10:30	Domesticity, Commodity, Theatricality: Atmospheres and Affects of Racial Performance in the Post-Racial Era Chair: Sean Metzger	Dance Ecologies Chair: Chris Braadlock	Artistic Research Group	Plastics Matter	Campus Climate: Crisis/Management of Academic Freedom	PSI Performance & Science Working Group	Affecting Change: Attending to Sites and Ecologies through Choreographic Practice Chair: Charlene Rajendran	
PS 4.1	Christina Bush Racial Fanzones: The Sneaker Campout and the Changing Terrain of Performance	Anny Mokotow Positioning the Dance Body in Contemporary Ecologies: Avoiding Crisis	Exercises, screenings, conversation	Ioana Jucan Performance Labor: With Concern to Plastics	K. Frances Lieder, Shayoni Mitra	Maike Bleeker and Eddie Paterson New PSI Performance & Science working group	Natalie Garrett Brown River Walking: Convivial Collaborations with Community and Place	
	Amani Morrison Black Domesticity and the Built Environment: The Kitcheneite Apartment in South Side Chicago	Laura Potrovic Relational Body(Scape(s)): Exploring the Body Boundaries in the State of Becoming				Alys Longley Title TBC		
	Brandi Wilkins Catanese Racial Ventriloquism and the Postracial Turn	Phoebe Rumsey The Body as Animal: Pack Mentality as a Climate for Performance in Wayne McGregor's <i>Entity</i> .					Amaara Raheem Container, Contained, Concepts: Tracing Passage Aboard a Cargo Ship	
BREAK: 10:30-11:00 Arts Hall - (Old Arts)								
11:00 - 13:00 Keynote: Rebecca Schneider – Extending a Hand: Gesture, Duration, and the Posthumous Turn – Old Arts Lecture Theatre								
LUNCH: 13:00-14:30 (Own arrangements) - OR for those who have booked, Spatula&Barcode FOODWAYS walks - meet at Arts Hall at 12:30								
14:30-16:00			Artistic Research Group (cont.)					
PS 4.2								
BREAK: Arts Hall - (Old Arts)								
CLOSING & DRINKS - Details TBA								

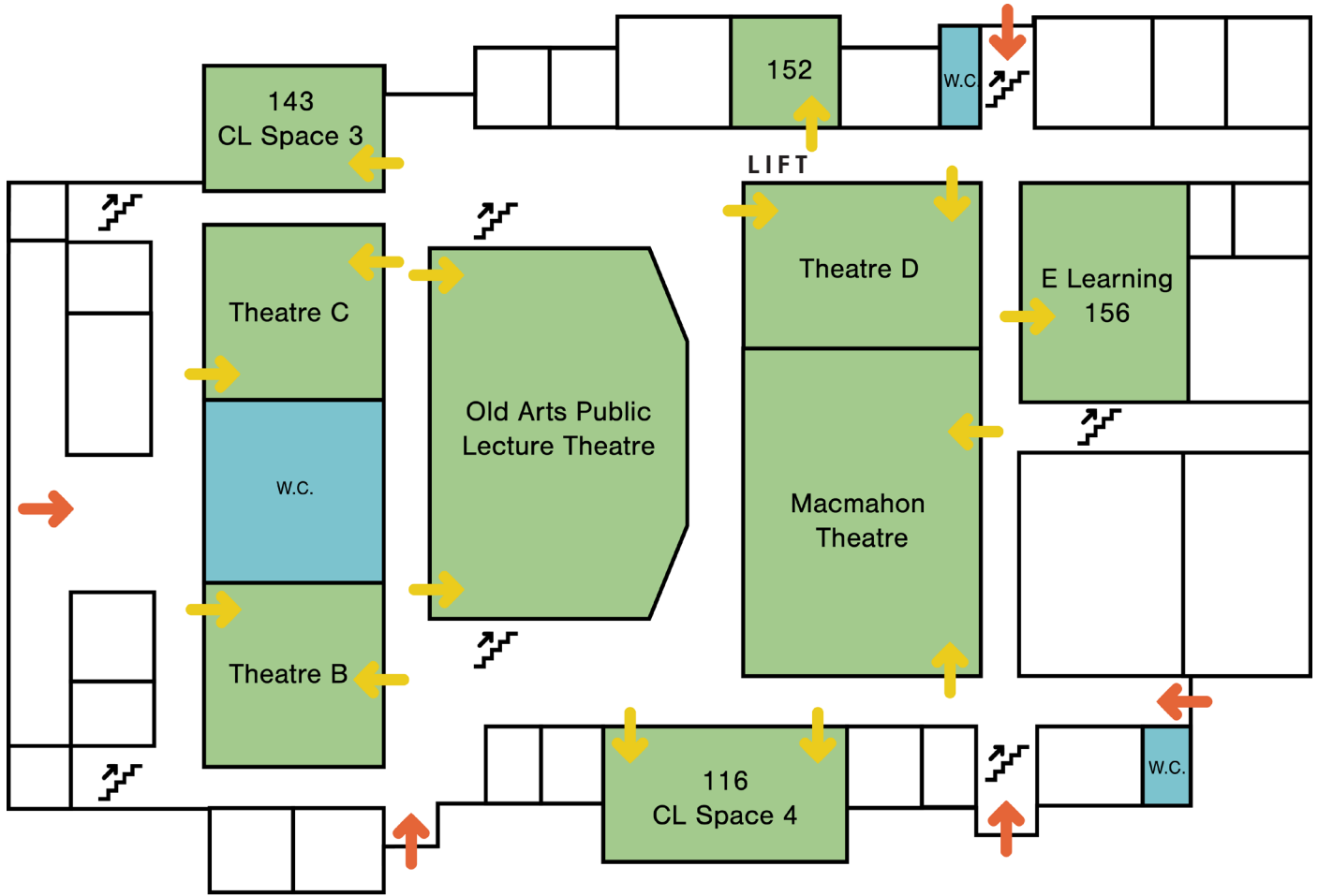
Thanks to the many volunteers, and conference partners both big and small.



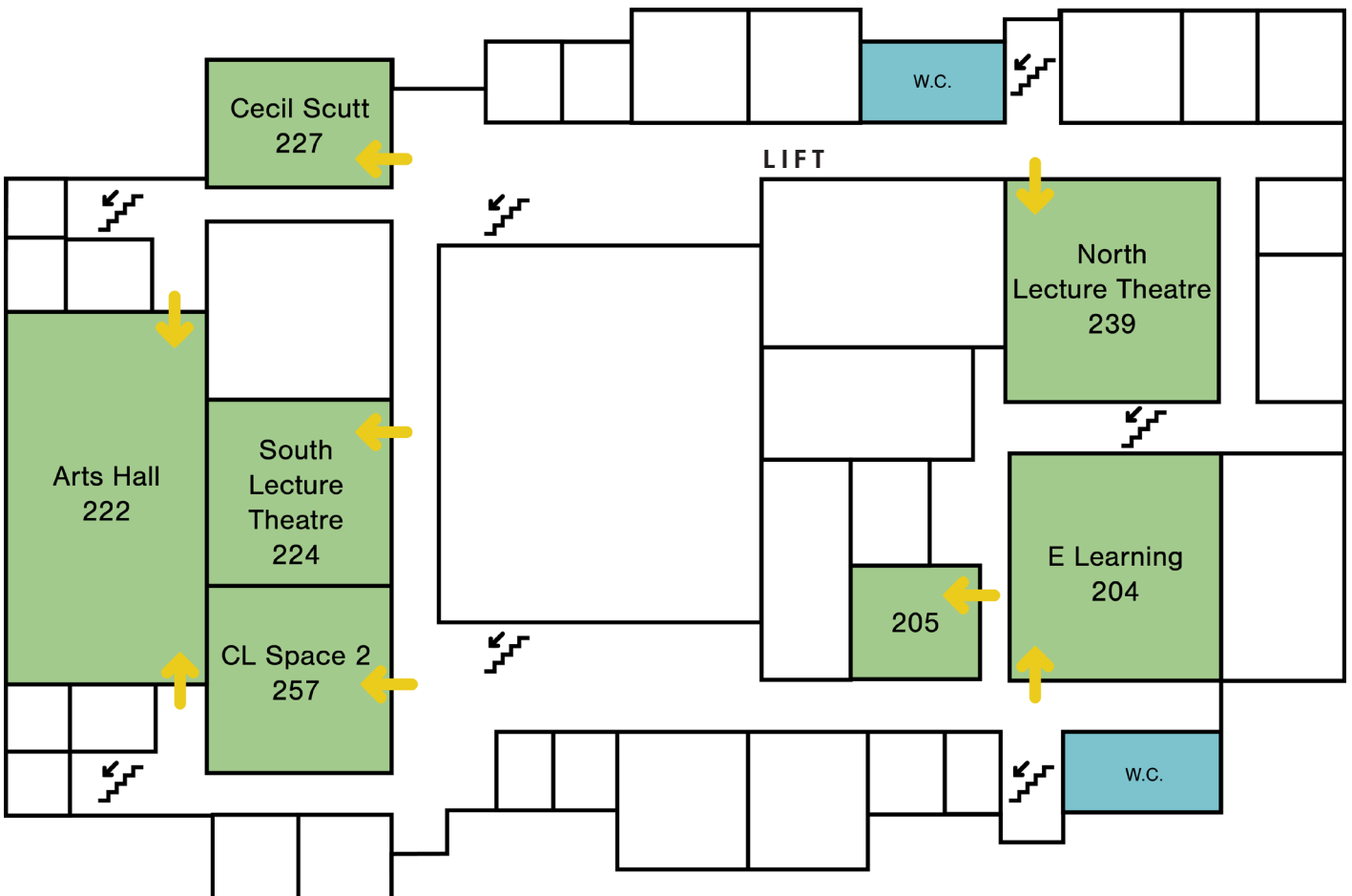
MAP 1 : UNIVERSITY OF MELBOURNE CAMPUS



MAP 02 : Old Arts



Old Arts - Level 1



Old Arts - Level 2

